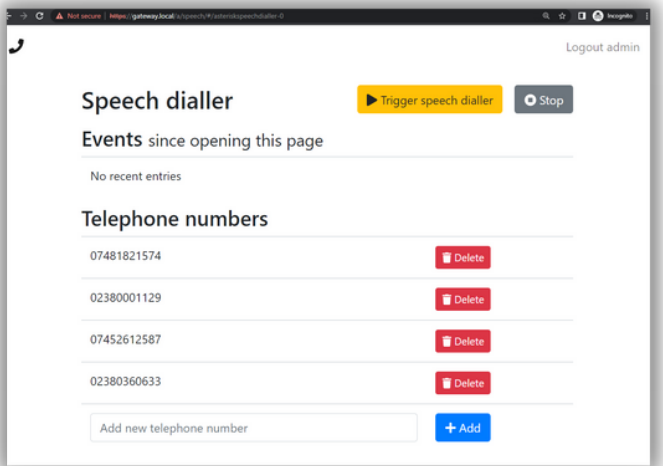
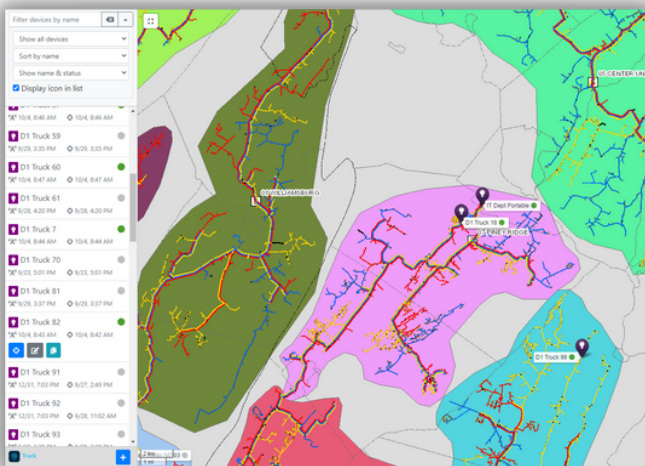
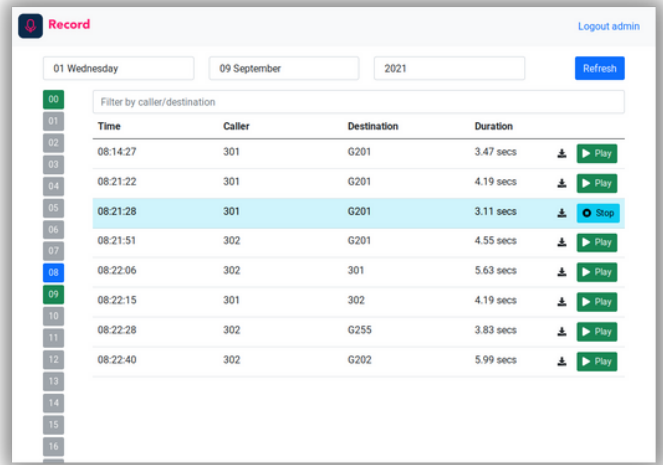
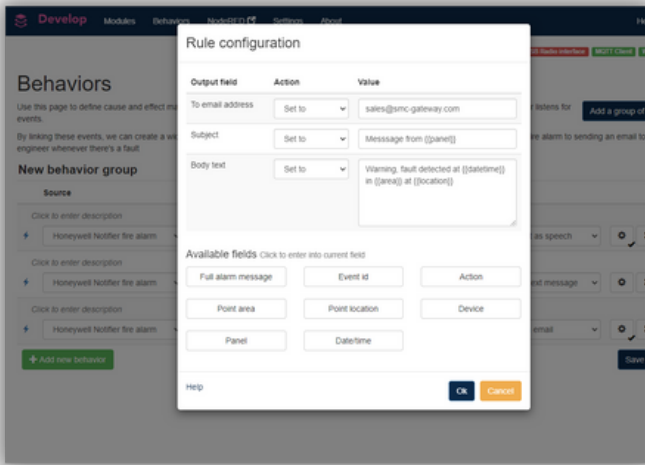


# SMC Gateway V2

The Gateway V2 is a software and hardware solution that allows developers to utilise our vast knowledge of devices and protocols to create powerful solutions and software products without having a deep understanding of each underlying protocol. Modules and behaviours are a fundamental building block of the V2. Modules contain everything needed to fulfil specific functions and behaviours allow for complex interactions between them.

In addition to our behaviour engine, the Gateway V2 includes Node-RED, a programming tool for wiring together hardware devices, APIs and online services in new and interesting ways.

There are also a range of "off the shelf" applications such as GPS live tracking, Call recording, Telephony services and Alarm integration.





## Software Modules

- Asterisk PBX
- BACnet
- Commend ICX Client
- Call recording
- Email IMAP
- Email SMTP
- Email zero configuration service
- Fire Panels, such as Kentec and Honeywell
- FTP Client
- FSK Modem
- Intruder alarms, such as Honeywell Galaxy
- LoRa
- MODBUS
- MQTT
- PageOne paging systems
- Push to Talk services, such as Zebra WFC
- Radio systems, such as Motorola and Hytera
- Scope paging systems
- SIP 2.0
- SNMP monitoring/manager
- SNMP Server
- Speech dialler
- SQL Client (MySQL Microsoft SQL, SQLite)
- SYSLOG
- TAP paging
- Telephone interconnect
- Telephony
- Teltonika Router SMS API
- TextMagic SMS Service
- Text-to-speech
- Twilio SMS Service

## Hardware Specification

- Operating Voltage: 9-28V DC
- Current consumption: 200mA
- Mounting: 3x Screw or DIN Rail
- Dimensions: 108mm x 92mm x 32mm
- 1x USB type A port
- 2x Ethernet Ports
- 1x Isolated RS232 Port
- 16x GPIO
- 3x Status LED's
- 32GB Usable storage (500 Hrs recording)